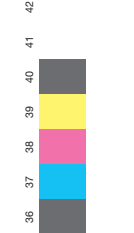


175 line screen, four-color process



175 line screen, black halftone



finch opaque

Bright White, Wove, 40 lb. text



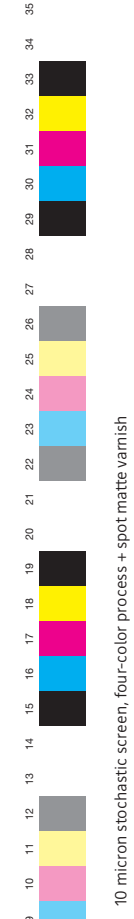
Printed on an 8-color Heidelberg Speedmaster press with conventional inks. Four-color process, match color, a second black (for paper identification copy) and spot matte varnish.

© 1998 SFI Inc.

finchpaper.com 1-800-833-9983

finch paper | valuedelivered

match color + K + matte varnish



10 micron stochastic screen, four-color process + spot matte varnish



175 line screen, four-color process + spot matte varnish