

# finch is SFI-certified

**Responsible forestry is at the roots of our growth.**

At Finch Paper, it's not enough to ensure that our paper always meets our customers' strict quality standards. We also want to be sure that the forests from which our paper originates are healthy and growing. That's the assurance you get, as Finch Paper has earned the responsible forestry certifications of both of the world's most respected third-party certification groups — the Sustainable Forestry Initiative® (PwC-SFICOC-293) program and the Forest Stewardship Council (SW-COC-000934).

Here's a look at what our SFI certification means:

## One of the world's leading forestry certification programs

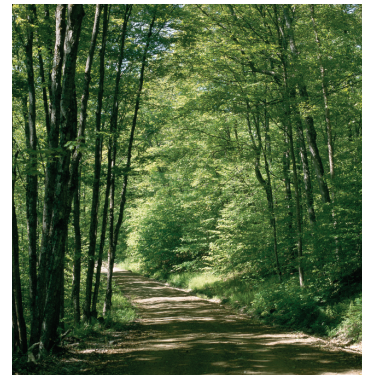
The SFI program is one of the largest in the world, with a standard based on principles and measures that promote responsible environmental behavior and sound forest management, including measures to protect water quality, biodiversity, wildlife habitat, species at risk and forests of exceptional conservation value. In addition to promoting sustainable forest management on SFI certified lands, SFI participants must also ensure that ALL of the wood they purchase comes from legal and well-managed sources. This is a critical component as 90% of the world's forests remain uncertified. Additional information about SFI can be found at [www.sfiprogram.org](http://www.sfiprogram.org).

## Finch and SFI

Some paper manufacturers produce SFI-certified paper solely by buying pre-made SFI-certified pulp from outside suppliers. Finch takes a far more hands-on, feet-in-the-forest approach. Our employees actually manage SFI-certified forests that provide wood to our mill, buy SFI-certified wood from other responsible landowners, and convert that wood into SFI-certified pulp and paper on our premises. This has enabled Finch Paper to earn both the SFI Forest Management and Chain-of-Custody certifications.

Finch Paper's SFI certification audit was conducted by the highly-respected PricewaterhouseCoopers.

[ [More ...](#) ]



## SFI-certified Finch Papers

Finch Premium Blend  
Finch Fine  
Finch Casa Opaque  
Finch Opaque  
Finch Fine iD  
Finch Fine Color Copy  
Finch Opaque Digital  
Finch Laser  
Finch Xerographic

ALL Finch papers qualify for the SFI Fiber Sourcing Label:



Any Finch product can carry the SFI Type 1 Certified Chain of Custody upon request with our Customer Service Department.



**finchpaper|value delivered**

**finch**

Finch Paper LLC  
One Glen Street, Glens Falls, NY 12801  
1-800-833-9983 [www.finchpaper.com](http://www.finchpaper.com)

---

[ Continued from front ... ]

### **Our Forest Management Certification**

Our SFI Forest Management Certification attests that Finch Paper's management of lands owned by The Nature Conservancy and other private landowners meets SFI's exacting standards for ensuring conservation of forest resources, protecting water quality and wildlife habitat and contributing to biodiversity. The certification audit also found that our foresters encourage responsible forest management and timber harvesting on the part of other private landowners from whom we purchase wood.

### **Our Chain-of-Custody Certification**

Our SFI chain-of-custody certification attests that Finch Paper has a tracking system in place to ensure that the wood used to make our paper comes from responsibly managed forests, and not from areas that were illegally harvested, major tropical wilderness areas, or biodiversity hotspots.

### **Finch In the Forest**

For more than a century, we owned our own forests in New York State's famed Adirondack Region and employed our own foresters to keep them healthy, growing and providing wood for our paper. The New York Times called them an "ecological marvel." In 2007, we sold 161,000 acres to a caretaker and partner we strongly admire — The Nature Conservancy — who continues to call upon our foresters to keep up their good work. We share an enduring commitment to helping these forests provide a perpetual supply of wood for paper and other products, a diversity of wildlife habitat, and clean air and water today and for generations to come.

### **Using The SFI Fiber Sourcing Label**

If you want to place the SFI Fiber Sourcing Label on your publication, it is not enough to only use SFI-certified Finch Paper.

You must also use an SFI-certified commercial printer. Your certified printer will be responsible for obtaining approval for the logo usage from the certifying body, and will then be authorized to place the logo for you.

### **Using The SFI Chain-of-Custody Label**

To use the chain-of-custody label, you must first purchase Finch Paper with a request that it carry the Certified Chain of Custody label (PwC-SFICOC-293). You must also purchase the paper from an SFI-certified merchant and use an SFI-certified printer. Your printer will be responsible for obtaining approval for the label usage from the certifying body, and will then be authorized to place the logo for you.

---

If you want to make a general statement about the environmental attributes of Finch Paper without using the SFI logo, we recommend:

"The wood fiber used to make this paper is independently certified to come from responsibly managed forests."